

# 2010

## Information Sheet for – Cam Goggle® Line Blind Valve



SchuF Group, An der Guldenmühle 8-10,  
65817 Eppstein/Frankfurt,  
Germany  
+49 6198 571100  
[www.schuf.com](http://www.schuf.com)

## The Cam-Goggle Valve

The SchuF **Cam Goggle Valve** is a tried and tested unique line blinding valve design. It incorporates the functionality of Fetterolf proprietary Cam-Set technology and the reliability of almost 100 years of SchuF custom valve design. Together they produce a line blinding system that ensures 100% absolute positive downstream shut off.

This dual functionality ensures that there is total separation of the gas main in the closed position – no media can flow from the upstream to the downstream gas main. "Man safe" isolation is achieved.

### Key Features and Benefits

- Absolute positive shut-off
- Fast changing from open to close or vice versa
- One man operation
- No line or flange spreading
- No special equipment is required
- Conforms to or exceeds ASME B16.5 and API 590 standards
- Low maintenance requirement
- Manual, electric, pneumatic or hydraulic actuation
- Unique safety features
- Special coatings for erosive or corrosive media or exacting operating environments
- Integrated drain and purge connections

### Functional Overview

The valve functions as follows:

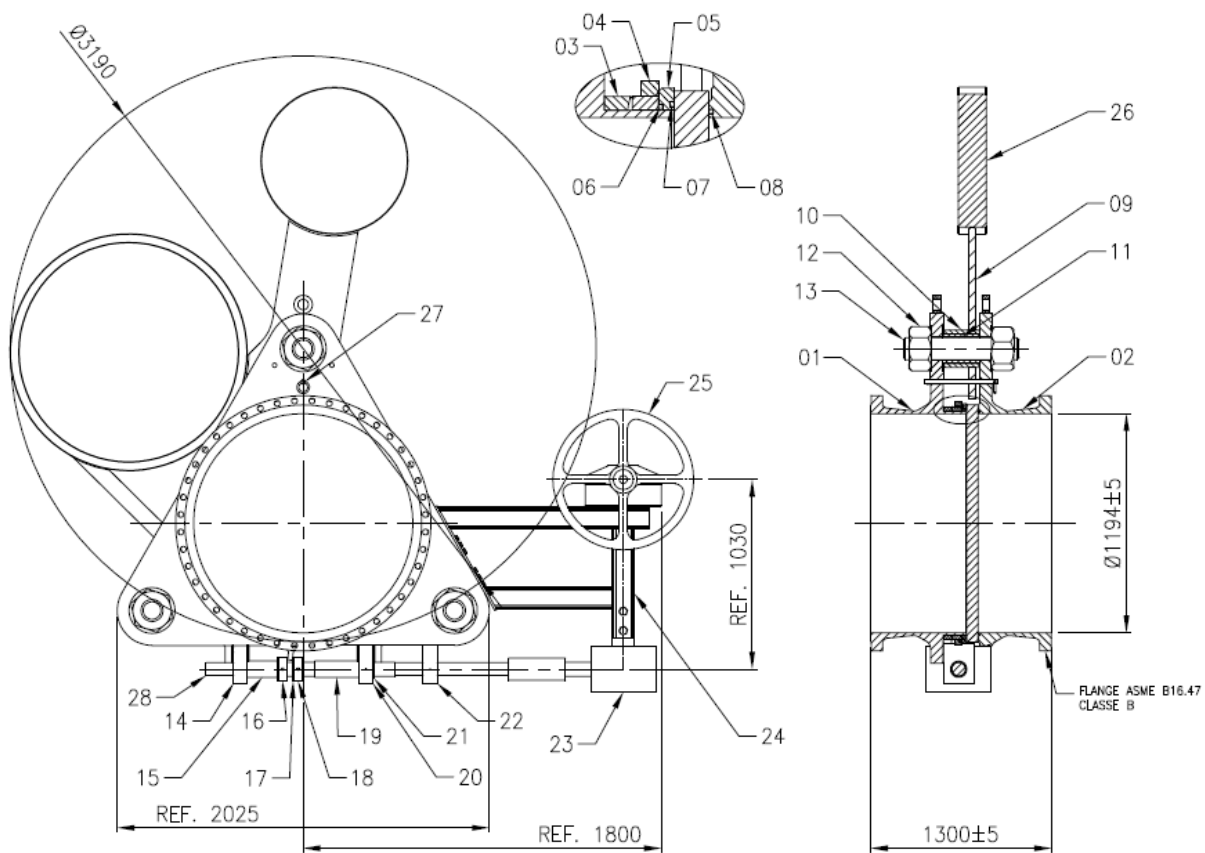
- 1) In the **closed position**, the downstream portion of the line is completely shut-off. No media can pass through. The solid part of the spectacle plate covers the pipeline opening completely. The plate is locked into place by the patented cam-set mechanism.
- 2) In the **intermediate or changing position**, the cam-set mechanism is closed by the hand wheel or actuator and the spectacle plate is free to move. In large sized Cam Goggle Valves a counterweight is placed on the adjacent end of the spectacle plate which makes changing from closed to open an easy, safe and fast operation.

The pipeline must be depressurised and drained before the Goggle Valve can be brought into the intermediate or open position.

- 3) In the **open position**, the cam-set mechanism has been opened, thus locking the open spectacle half into place in the pipeline. Media can now flow from upstream to downstream.

The Cam Goggle valve comes with many options. Goggle Valves that need to be installed in a vertical pipeline can be supplied with a special system to support heavy spectacle plates. Locking devices, spectacle plate covers, and a variety of special sealing rings are also available.

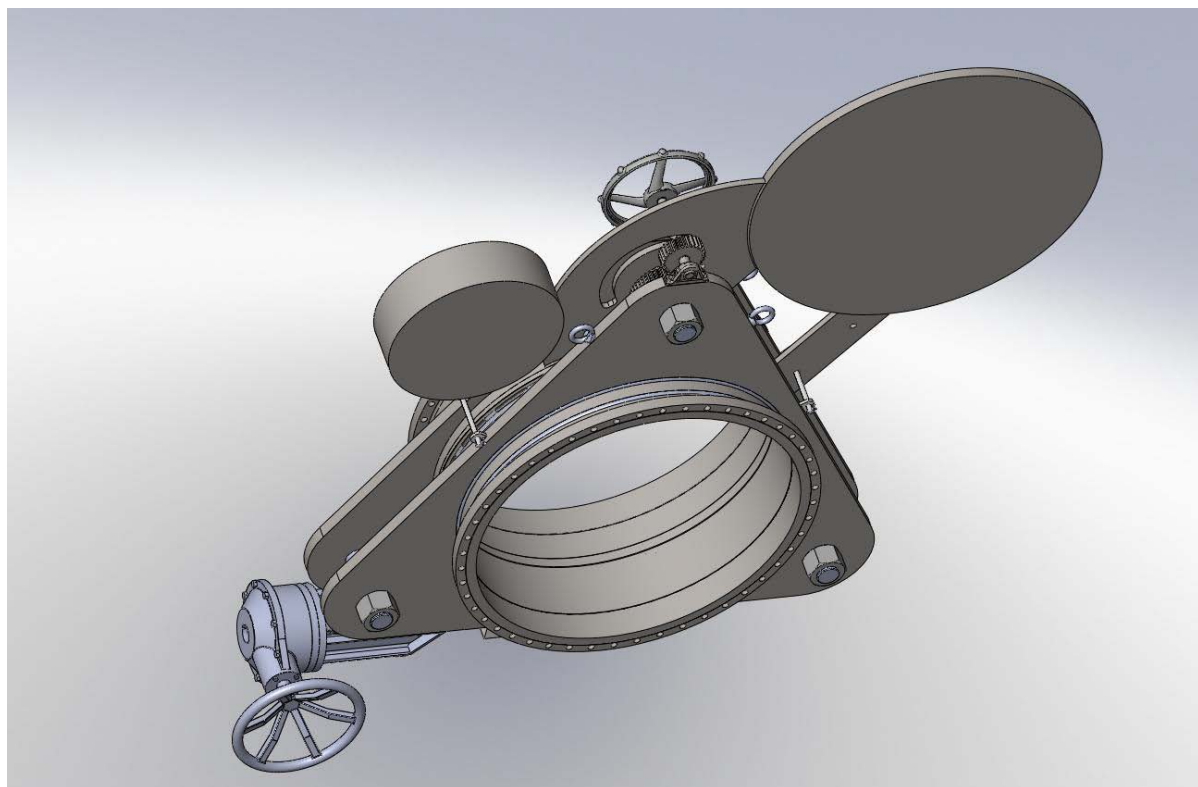
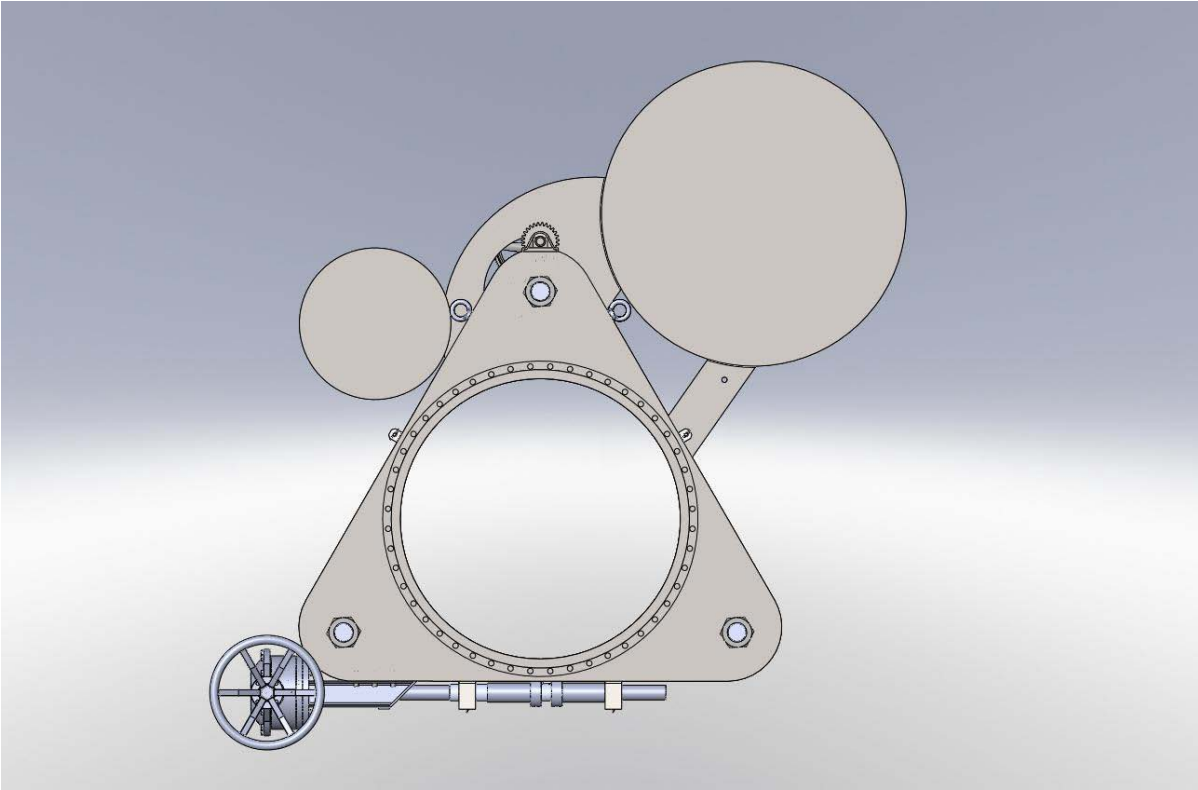
## Example 48 Inch Cam Goggle Valve – Parts List and Dimensions



Item	Description	Item	Description
1	Body cam side	16	Actuating disc
2	Body Seal side	17	Thrust washer
3	Cam	18	Actuating disc
4	Cam actuator	19	Spacer
5	Seal carrier	20	Bearing
6	O ring, seal carrier	21	Threaded bush
7	O ring, seal carrier	22	Bearing
8	O ring, body	23	Bevel gear
9	Spectacle plate	24	Bevel gear support
10	Guide spacer	25	Bevel gear
11	Spacer	26	Counter weight
12	Nut	27	Spectacle plate lock
13	Stud	28	Stem
14	Bearing block	29	-
15	Spacer, stroke	30	-



## Example of a 52 inch Cam Goggle Valve



## Technical Data

Cam Goggle Valve	Standard	Custom Design
Size	To 48" – DN1200	To 100" – DN2500
Body material	Carbon steel, Stainless steel	Hastelloy, Titanium
Spectacle plate	Stainless steel	Duplex, Hastelloy, Titanium
Sealing ring	Viton	PTFE, Kalrez, Graphite and many others on request
Temperature	To 232°C – 450°F	Up to 538°C – 1000°F
Pipe connection	Butt weld	Flanged
Pressure rating	ASME 150#	ASME 300#, 600#, 900#
Options	Counterweight	Locking device, Drain/Purge connections, Roller plate
Coatings	Standard paint	Epoxy, Teflon, Sermetel, Ceramic, and others on request
Actuation	Manual	Electric, Hydraulic, Pneumatic
Standards	ASME, DIN, GOST R, ISO, PED	TÜV, NACE; US Navy

## Customer References

SchuF has delivered over one million valves and includes the following companies among its customers:

***ABB, Alcan, BASF, Bayer, BP, Chevron, Dalian Refinery, Degussa, DuPont, Exxon, Formosa Plastics, GE, Hoechst, Hyundai, Inventa Fischer, Jordan Phosphate, Kohle Öl Bottrop, Lukoil, Lurgi, Merck, OPC, Petrobras, Pfizer, Pemex, Reliance, Roche, Schering, Shell, Shenhua, Sinopec, Temex, Uhde and Yisheng***

SchuF's success has been built on its ability to design and manufacture high performance valves to match customer requirements, to create industry standards, and to redesign them as end user requirements change.